

# Technical Data Sheet

## Fullerene C60 PCBA

Revision Date: 2009-09-01

Date Issued: 2009-08-10

### 1 IDENTIFICATION OF THE SUBSTANCE/PREPARATION AND THE COMPANY / UNDERTAKING

<b>Product name</b>	C60 PCBA
<b>Product code</b>	CP-0032-HP
<b>Supplier</b>	IoLiTec Ionic Liquids Technologies GmbH Salzstrasse 184 D-74076 Heilbronn Germany
<b>Telephone</b>	+49 (0)7131 - 898390
<b>Fax</b>	+49 (0)7131 - 89839109
<b>Emergency telephone</b>	+49 (0)179 - 5322578

### 2 COMPOSITION / INFORMATION ON INGREDIENTS

<b>Ingredient name</b>	1,2(2a)-Homo[5,6]fullerene-C60-1h-2a-butanoic acid, 2a-phenyl
<b>CAS No.</b>	none
<b>Molecular formula</b>	$C_{60}C_{11}H_{12}O_2$
<b>Molecular weight</b>	896.85 amu
<b>Purity</b>	99.0+%
<b>Solubility</b>	THF, CS <sub>2</sub> , 1,4-Dioxan, DMF

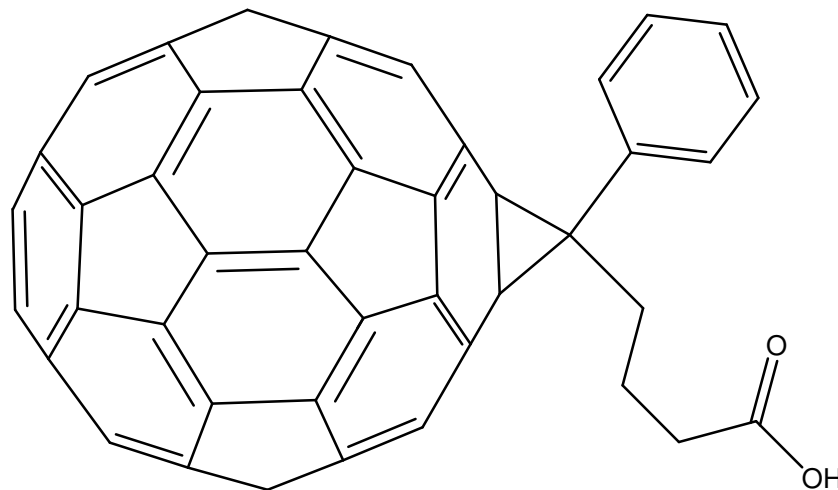
# Technical Data Sheet

## Fullerene C60 PCBA

Revision Date: 2009-09-01

Date Issued: 2009-08-10

### Structure



### 3 ORDER INFORMATION

C60 PCBA can be obtained in the following standard quantities.

Quantity	Price
10 mg	Please enquire
50 mg	Please enquire
100 mg	Please enquire
500 mg	Please enquire

Please send your order via email to [order@nanomaterials.iolitec.de](mailto:order@nanomaterials.iolitec.de) or fax +49 (0)7131 – 89839109.

# Technical Data Sheet

## Fullerene C60 PCBA

Revision Date: 2009-09-01

Date Issued: 2009-08-10

---

### 4 DISCLAIMER

#### DISCLAIMER

THE ABOVE INFORMATION IS BELIEVED TO BE CORRECT BUT DOES NOT PURPOPOSED TO BE ALL INCLUSIVE AND SHALL BE USED ONLY AS A GUIDE. IOLITEC SHALL NOT BE HELD LIABLE FOR ANY DAMAGE RESULTING FROM HANDLING OR FROM CONTACT WITH THE ABOVE PRODUCT. THIS INFORMATION RELATES ONLY TO THE SPECIFIC MATERIAL DESIGNATED AND MAY NOT BE VALID FOR SUCH MATERIAL USED IN COMBINATION WITH ANY OTHER MATERIALS OR ANY PROCESS. IT IS THE USER'S RESPONSIBILTY TO SATISFY HIMSELF AS TO THE SUITABILITY OF SUCH INFORMATION FOR HIS OWN PARTICULAR USE.

IN NO WAY SHALL IOLITEC BE LIABLE FOR ANY CLAIMS, LOSSES OR DAMAGES OF ANY THIRD PARTY OR FOR THE LOST PROFITS OR ANY SPECIAL, INDIRECT, INCIDENTAL, CONSEQUENTIAL OR EXEMPLARY DAMAGES, HOWSOEVER ARISING, EVEN IF THE COMPANY HAS BEEN ADVISED OF THE POSSIBILITY OF SUCH DAMAGES.