

Technical Data Sheet

Palladium powder

Revision Date: 08/14/2019

Date Issued: 08/14/2019

1 IDENTIFICATION OF THE SUBSTANCE/PREPARATION AND THE COMPANY / UNDERTAKING

Product name	Palladium powder
Product code	NM-0041-UP
Supplier	IoLiTec Ionic Liquids Technologies GmbH Salzstrasse 184 D-74076 Heilbronn Germany
Telephone	+49 (0)7131 - 898390
Fax	+49 (0)7131 - 89839109
Emergency telephone	+49 (0)176 - 84850874

2 COMPOSITION / INFORMATION ON INGREDIENTS

Ingredient name	Palladium
Empirical Formula	Pd
CAS No.	7440-05-3
Molecular weight	106.42 amu
Purity	99.9% (metal basis)
Average Particle Size	20-30 nm
Specific Surface Area	40 m ² /g
Morphology	spherical
True Density	11.99 g/cm ³
Melting point	1555°C

Technical Data Sheet

Palladium powder

Revision Date: 08/14/2019

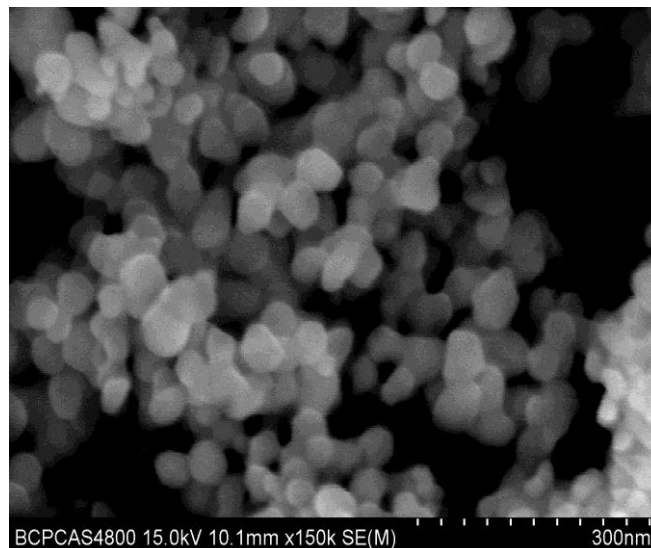
Date Issued: 08/14/2019

3 SPECIFICATIONS

typical impurities (%):

Pt	<0.0031	Cr	<0.0005
Rh	<0.0005	Cu	<0.0005
Ir	<0.001	Fe	<0.0005
Ru	<0.001	Mg	<0.0005
Au	<0.0005	Mn	<0.0005
Ag	<0.00050	Ni	<0.0005
Al	<0.0005	Pb	<0.0005
Bi	<0.0005	Si	<0.001
Ca	<0.001	Sn	<0.0005
Co	<0.0005	Zn	<0.001

4 SCANNING ELECTRON MICROSCOPY



Technical Data Sheet

Palladium powder

Revision Date: 08/14/2019

Date Issued: 08/14/2019

5 OTHER INFORMATION

DISCLAIMER

THE ABOVE INFORMATION IS BELIEVED TO BE CORRECT BUT DOES NOT PURPOPOSED TO BE ALL INCLUSIVE AND SHALL BE USED ONLY AS A GUIDE. IOLITEC SHALL NOT BE HELD LIABLE FOR ANY DAMAGE RESULTING FROM HANDLING OR FROM CONTACT WITH THE ABOVE PRODUCT. THIS INFORMATION RELATES ONLY TO THE SPECIFIC MATERIAL DESIGNATED AND MAY NOT BE VALID FOR SUCH MATERIAL USED IN COMBINATION WITH ANY OTHER MATERIALS OR ANY PROCESS. IT IS THE USER'S RESPONSIBILTY TO SATISFY HIMSELF AS TO THE SUITABILITY OF SUCH INFORMATION FOR HIS OWN PARTICULAR USE.

IN NO WAY SHALL IOLITEC BE LIABLE FOR ANY CLAIMS, LOSSES OR DAMAGES OF ANY THIRD PARTY OR FOR THE LOST PROFITS OR ANY SPECIAL, INDIRECT, INCIDENTAL, CONSEQUENTIAL OR EXEMPLARY DAMAGES, HOWSOEVER ARISING, EVEN IF THE COMPANY HAS BEEN ADVISED OF THE POSSIBILITY OF SUCH DAMAGES.