

# Technical Data Sheet

## alpha-Aluminium oxide powder

Date Issued: 2019-01-02

### 1 IDENTIFICATION OF THE SUBSTANCE/PREPARATION AND THE COMPANY / UNDERTAKING

<b>Product name</b>	alpha-Aluminium oxide powder
<b>Product code</b>	NO-0003-HP
<b>Supplier</b>	IoLiTec Ionic Liquids Technologies GmbH Salzstrasse 184 D-74076 Heilbronn Germany
<b>Telephone</b>	+49 (0)7131 - 898390
<b>Fax</b>	+49 (0)7131 - 89839109
<b>Emergency telephone</b>	+49 (0)179 - 5322578

### 2 COMPOSITION / INFORMATION ON INGREDIENTS

<b>Ingredient name</b>	Aluminium oxide, alpha
<b>CAS No.</b>	1344-28-1
<b>Empirical Formula</b>	Al <sub>2</sub> O <sub>3</sub>
<b>Molecular weight</b>	101.96 amu
<b>Purity</b>	99+ %
<b>Average Particle Size (XRD)</b>	80 nm
<b>Specific Surface Area (BET)</b>	> 15 m <sup>2</sup> /g
<b>Color</b>	white
<b>Morphology</b>	nearly spherical
<b>Bulk Density</b>	1.6 g/cm <sup>3</sup>
<b>True Density</b>	3.60 g/cm <sup>3</sup>
<b>Melting point</b>	2045°C
<b>Boiling point</b>	2980°C

# Technical Data Sheet

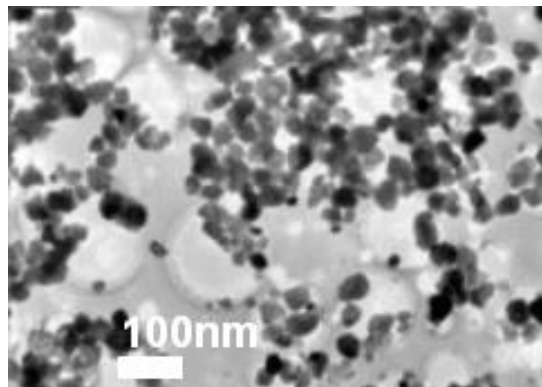
## alpha-Aluminium oxide powder

Date Issued: 2019-01-02

### 3 CONTENT OF IMPURITIES

Impurity	Content
Na	< 0.1 %
Si	< 5 ppm
Ca	< 2 ppm
Fe	< 1 ppm
Co	< 1 ppm

### 4 TRANSMISSION ELECTRON MICROSCOPY



# Technical Data Sheet

## alpha-Aluminium oxide powder

Date Issued: 2019-01-02

---

### 5 OTHER INFORMATION

#### DISCLAIMER

THE ABOVE INFORMATION IS BELIEVED TO BE CORRECT BUT DOES NOT PURPOPOSED TO BE ALL INCLUSIVE AND SHALL BE USED ONLY AS A GUIDE. IOLITEC SHALL NOT BE HELD LIABLE FOR ANY DAMAGE RESULTING FROM HANDLING OR FROM CONTACT WITH THE ABOVE PRODUCT. THIS INFORMATION RELATES ONLY TO THE SPECIFIC MATERIAL DESIGNATED AND MAY NOT BE VALID FOR SUCH MATERIAL USED IN COMBINATION WITH ANY OTHER MATERIALS OR ANY PROCESS. IT IS THE USER'S RESPONSIBILTY TO SATISFY HIMSELF AS TO THE SUITABILITY OF SUCH INFORMATION FOR HIS OWN PARTICULAR USE.

IN NO WAY SHALL IOLITEC BE LIABLE FOR ANY CLAIMS, LOSSES OR DAMAGES OF ANY THIRD PARTY OR FOR THE LOST PROFITS OR ANY SPECIAL, INDIRECT, INCIDENTAL, CONSEQUENTIAL OR EXEMPLARY DAMAGES, HOWSOEVER ARISING, EVEN IF THE COMPANY HAS BEEN ADVISED OF THE POSSIBILITY OF SUCH DAMAGES.