

# Technical Data Sheet

## Iron powder

Revision Date:8/18/2025

### 1 IDENTIFICATION OF THE SUBSTANCE/PREPARATION AND THE COMPANY / UNDERTAKING

<b>Product name</b>	Iron powder
<b>Product code</b>	NM-0029-UP
<b>CAS</b>	7439-89-6
<b>Supplier</b>	IoLiTec Ionic Liquids Technologies GmbH Im Zukunftspark 9 D-74076 Heilbronn Germany
<b>Telephone</b>	+49 (0)7131 - 898390
<b>Fax</b>	+49 (0)7131 - 89839109
<b>Emergency telephone</b>	+49 (0)151-41255671

### 2 COMPOSITION / INFORMATION ON INGREDIENTS

<b>Ingredient name</b>	Iron powder
<b>CAS No.</b>	7439-89-6
<b>Empirical Formula</b>	Fe
<b>Molecular weight</b>	55.85 g/mol
<b>Purity</b>	99.7%
<b>O content</b>	~ 5.0%
<b>Morphology</b>	spherical
<b>Average Particle Size</b>	60-80 nm (TEM)
<b>Specific Surface Area</b>	7 m <sup>2</sup> /g (BET)
<b>Relative Density</b>	7.87 g/cm <sup>3</sup>
<b>Bulk Density</b>	0.5 g/cm <sup>3</sup>

# Technical Data Sheet

Iron powder

Revision Date:8/18/2025

**Melting point**

1535°C

## 3 CONTENT OF IMPURITIES

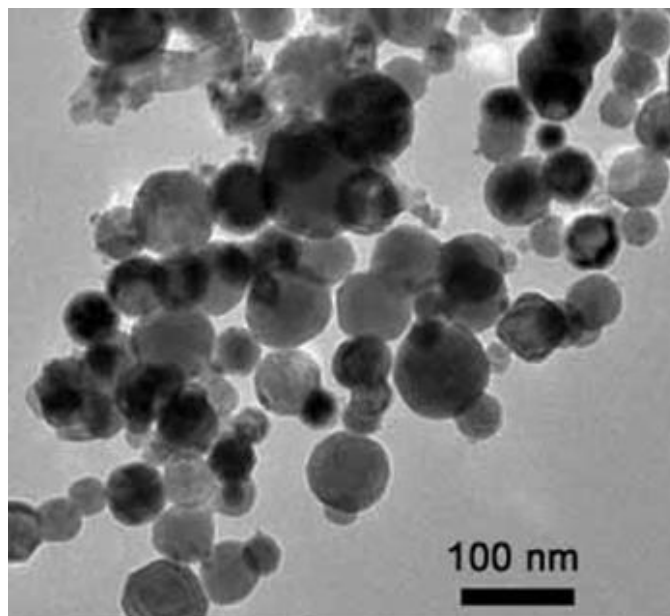
Impurity	Content
Cu	400 ppm
Ni	300 ppm
Al	200 ppm
Ca	50 ppm
Cr	50 ppm
Mo	50 ppm
Ti	50 ppm
Si	30 ppm
Sn	30 ppm
Pb	20 ppm
Mg	10 ppm
Mn	10 ppm

# Technical Data Sheet

Iron powder

Revision Date:8/18/2025

## 4 TEM IMAGE



## 5 OTHER INFORMATION

### DISCLAIMER

THE ABOVE INFORMATION IS BELIEVED TO BE CORRECT BUT DOES NOT PURPOSED TO BE ALL INCLUSIVE AND SHALL BE USED ONLY AS A GUIDE. IOLITEC SHALL NOT BE HELD LIABLE FOR ANY DAMAGE RESULTING FROM HANDLING OR FROM CONTACT WITH THE ABOVE PRODUCT. THIS INFORMATION RELATES ONLY TO THE SPECIFIC MATERIAL DESIGNATED AND MAY NOT BE VALID FOR SUCH MATERIAL USED IN COMBINATION WITH ANY OTHER MATERIALS OR ANY PROCESS. IT IS THE USER'S RESPONSIBILITY TO SATISFY HIMSELF AS TO THE SUITABILITY OF SUCH INFORMATION FOR HIS OWN PARTICULAR USE.

# Technical Data Sheet

## Iron powder

Revision Date:8/18/2025

---

IN NO WAY SHALL IOLITEC BE LIABLE FOR ANY CLAIMS, LOSSES OR DAMAGES OF ANY THIRD PARTY OR FOR THE LOST PROFITS OR ANY SPECIAL, INDIRECT, INCIDENTAL, CONSEQUENTIAL OR EXEMPLARY DAMAGES, HOWSOEVER ARISING, EVEN IF THE COMPANY HAS BEEN ADVISED OF THE POSSIBILITY OF SUCH DAMAGES.