

Technical Data Sheet

Indium Tin Oxide, blue

Revision Date: 10/06/2025

1 IDENTIFICATION OF THE SUBSTANCE/PREPARATION AND THE COMPANY / UNDERTAKING

| | |
|----------------------------|---|
| Product name | Indium Tin Oxide, blue |
| Product code | NO-0085-UP |
| CAS | 50926-11-9 |
| Supplier | IoLiTec Ionic Liquids Technologies GmbH Im Zukunftspark 9 D-74076 Heilbronn Germany |
| Telephone | +49 (0)7131 - 898390 |
| Fax | +49 (0)7131 - 89839109 |
| Emergency telephone | +49 (0)151-41255671 |

2 COMPOSITION / INFORMATION ON INGREDIENTS

| | |
|------------------------------|--|
| Ingredient name | Indium Tin Oxide, blue |
| CAS No. | 50926-11-9 |
| Empirical Formula | $\text{In}_2\text{O}_3:\text{SnO}_2$ (9:1) |
| Molecular weight | ~ 265 g/mol |
| Color | blue |
| Purity | 99.99 % |
| Morphology | spherical |
| Average Particle Size | 20 – 70 nm |
| Specific Surface Area | 15 – 40 m ² /g |
| True Density | 7.12 g/cm ³ |
| Bulk Density | ~ 0.8 g/cm ³ |

Technical Data Sheet

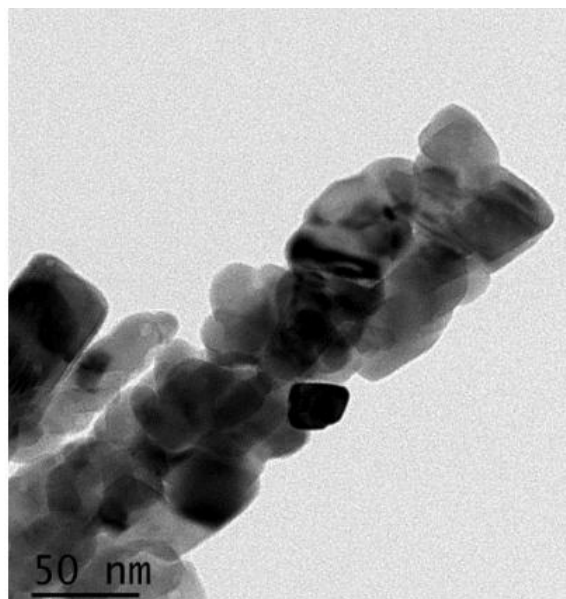
Indium Tin Oxide, blue

Revision Date: 10/06/2025

3 CONTENT IMPURITIES

| Impurity | Content |
|----------|----------------|
| Cd | ≤ 5.0 ppm |
| Cu | ≤ 5.0 ppm |
| Fe | ≤ 5.0 ppm |
| Pb | ≤ 5.0 ppm |
| Zn | ≤ 5.0 ppm |
| As | ≤ 5.0 ppm |
| Ti | ≤ 5.0 ppm |

4 TRANSMISSION ELECTRON MICROSCOPY



Technical Data Sheet

Indium Tin Oxide, blue

Revision Date: 10/06/2025

5 OTHER INFORMATION

DISCLAIMER

THE ABOVE INFORMATION IS BELIEVED TO BE CORRECT BUT DOES NOT PURPOSED TO BE ALL INCLUSIVE AND SHALL BE USED ONLY AS A GUIDE. IOLITEC SHALL NOT BE HELD LIABLE FOR ANY DAMAGE RESULTING FROM HANDLING OR FROM CONTACT WITH THE ABOVE PRODUCT. THIS INFORMATION RELATES ONLY TO THE SPECIFIC MATERIAL DESIGNATED AND MAY NOT BE VALID FOR SUCH MATERIAL USED IN COMBINATION WITH ANY OTHER MATERIALS OR ANY PROCESS. IT IS THE USER'S RESPONSIBILITY TO SATISFY HIMSELF AS TO THE SUITABILITY OF SUCH INFORMATION FOR HIS OWN PARTICULAR USE.

IN NO WAY SHALL IOLITEC BE LIABLE FOR ANY CLAIMS, LOSSES OR DAMAGES OF ANY THIRD PARTY OR FOR THE LOST PROFITS OR ANY SPECIAL, INDIRECT, INCIDENTAL, CONSEQUENTIAL OR EXEMPLARY DAMAGES, HOWSOEVER ARISING, EVEN IF THE COMPANY HAS BEEN ADVISED OF THE POSSIBILITY OF SUCH DAMAGES.